



XNMS REPEATER MANAGEMENT SYSTEM

- Real-time Monitoring
- Service Statistics
- Remote Configuration



Hytera retains right to change the product design and specification. Should any printing mistake occur, Hytera doesn't bear relevant responsibility. Little difference between real product and product indicated by printing materials will occur by printing reason.

HYT, **Hytera** are registered trademarks of Hytera Communications Corp., Ltd.
© 2020 Hytera Communications Corp., Ltd. All Rights Reserved.

Hytera Communications Corporation Limited
Stock Code: 002583.SZ

Address: Hytera Tower, Hi-Tech Industrial Park North, 9108# Beihuan Road, Nanshan District, Shenzhen, P.R.C.

Tel: +86-755-2697 2999 **Fax:** +86-755-8613 7139 **Post:** 518057

Http: //www.hytera.com **marketing@hytera.com**



The XNMS allows you to remotely monitor repeaters running, and make diagnostic to find out the problems when repeater errors occurs. Also you can use XNMS to query the radio services in a certain period of time, and check the running of the conventional system and XPT system.



REAL-TIME MONITORING

Real time shows the repeater running information and alerts, so that you can quickly find out the problems.



EMAIL ALERT*

Emails the alert the first time around, so you no need to look at the user interface at all time.



RSSI MAP

Shows the RSSI of all radios in the repeater range, providing deployment reference for better coverage.



SERVICE STATISTICS

You can check and query the repeater and radio information, export the information sheet for system optimization.



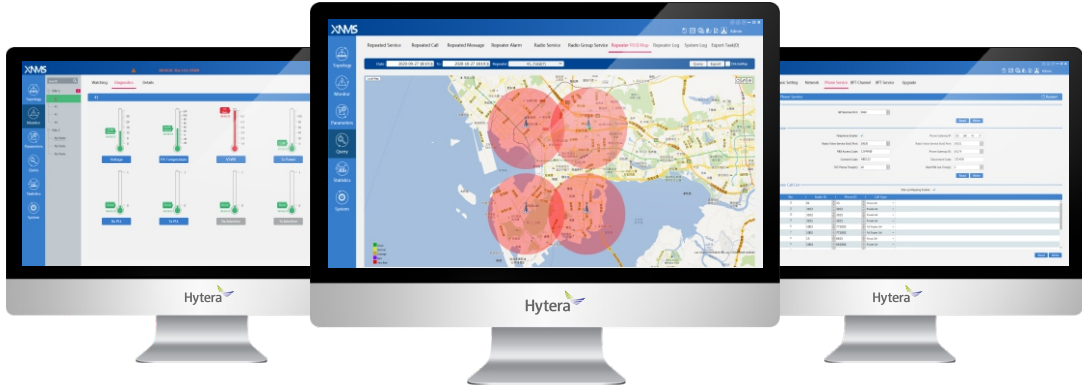
REMOTE CONFIGURATION

Over-the-air configure the repeater parameters for flexible connection and management.



PERMISSION CONTROL

Defines administrator and user permissions to ensure the system security.



*EMAIL ALERT is optional

Version Differences

The XNMS software has simplified version and standard version, and the simplified one is freeware. The standard one supports up to 256 repeaters, while the simplified one 64 repeaters.

	Features	Simplified Version	Standard Version
Topology	Device topology, electronic maps	×	√
	Dynamic monitoring	×	√
Monitoring alert	Diagnostics, Details	√	√
	EMAIL ALERT	×	√
Device parameters	Basic Setting, Network, Phone Service, Service, Digital Channel, Upgrade, Analog Channel, Mixed Channel	√	√
Data query	Repeated Service, Repeated Call, Repeated Message, Repeater Alarm, Radio Service, Radio Group Service, Repeater RSSI Map, Service Data Export	×	√
	Repeater Log, System Log,	√	√
Service statistics	Repeated Service, Repeater Private Call, Repeater Group Call, Radio Service, Radio Group Service, Repeater RSSI, Custom Report, Service Data Export	×	√
System management	Repeater, User, Setting, Database	√	√

Applications

